

'Tweet, tweet, tweet - who is hatching out of the egg?'
Make with the MERL: Egg-thusiastic Hatching Peg Chicks!

You will need:

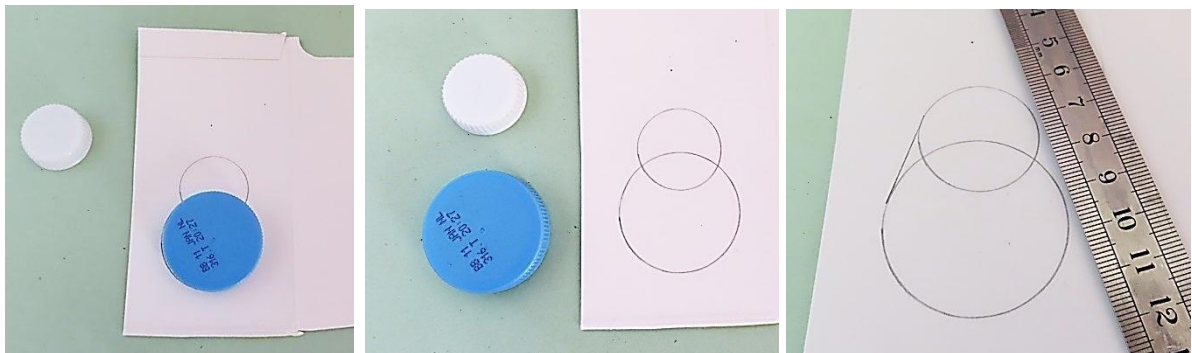
- Coloured card, plain white card**
- Plastic Bottle caps**
- Clothes pegs
- Scissors
- Glue/ sticky tape
- Colour pencils

**This example uses old card packaging. Make sure any recycled materials you use are clean.

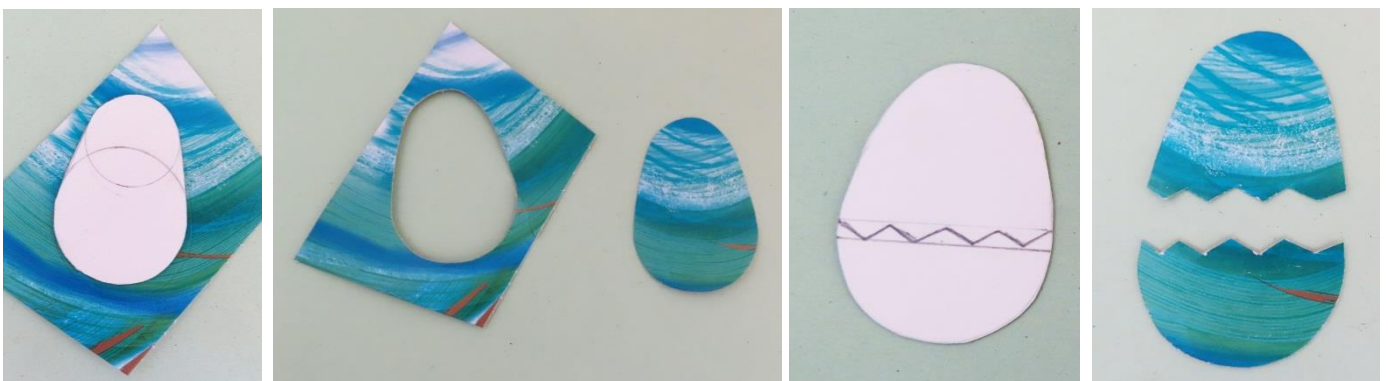


Method

1. Make an egg template using the bottle caps and card. Bottle cap sizes are 4cm and 2.5cm in diameter. Draw a circle with the large bottle cap, and then with the smaller cap draw a second circle overlapping the large circle. Use a ruler draw a straight line connecting the edges of the two circles. Do this on both sides of the circles. Then cut out your egg template.



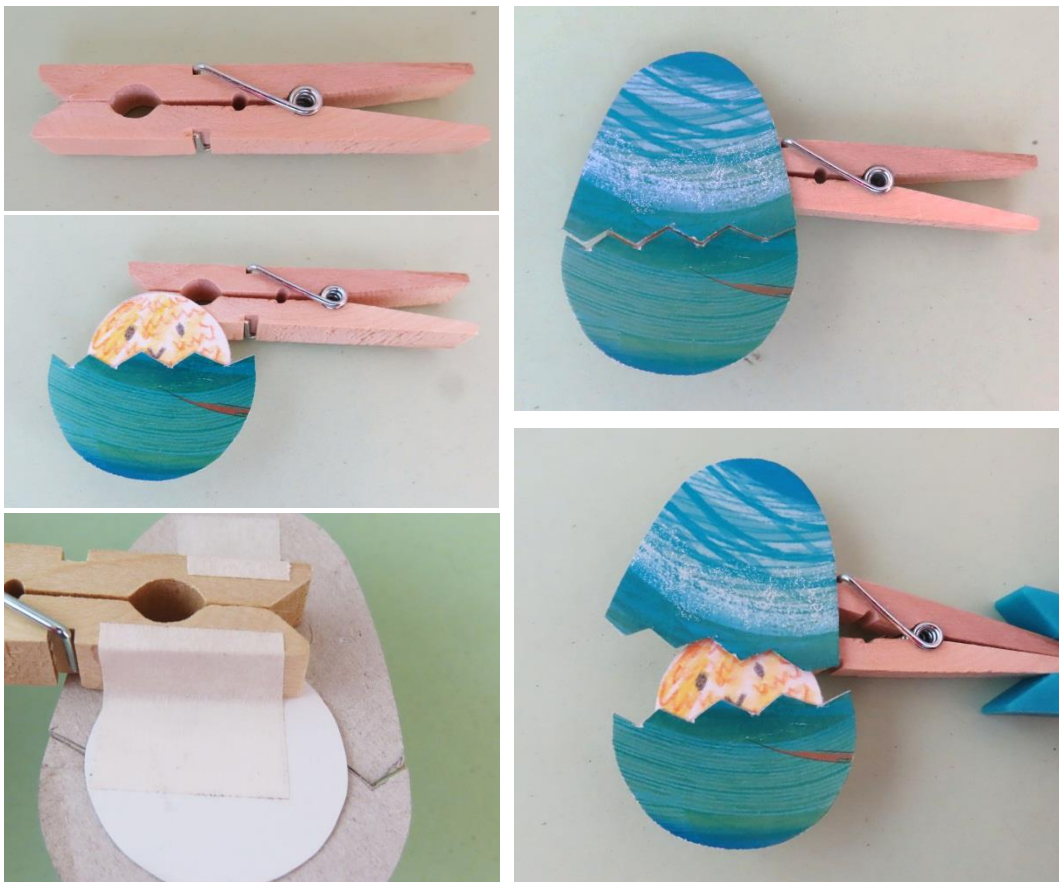
2. Take some patterned card. Use the egg template to draw around and cut out your egg shape. Turn the egg over to the plain side and draw a zig-zag line about half way, then cut along the zig-zag line to separate the egg.



3. Draw your little chick on a piece of plain white card; use the small (2.5cm) bottle cap as your template. Colour in the chick; draw in its eyes and beak, cut out the little chick.
4. Stick your chick to the bottom section of the egg.



5. Assemble the peg chick, glue bottom section first to one side of the peg, then carefully glue the top egg section to the other side of the peg. Check the peg is still opening and closing.
6. Secure the egg at the back to the peg by using a piece of sticky tape.



7. Test the peg, open and close the peg to reveal your little hatching chick. 'Tweet, tweet, tweet who is hatching out of the egg?'

Repeat this process to hatch more chicks....Have an egg-citing time making!